



# GARHBETA COLLEGE

Affiliated to Vidyasagar University

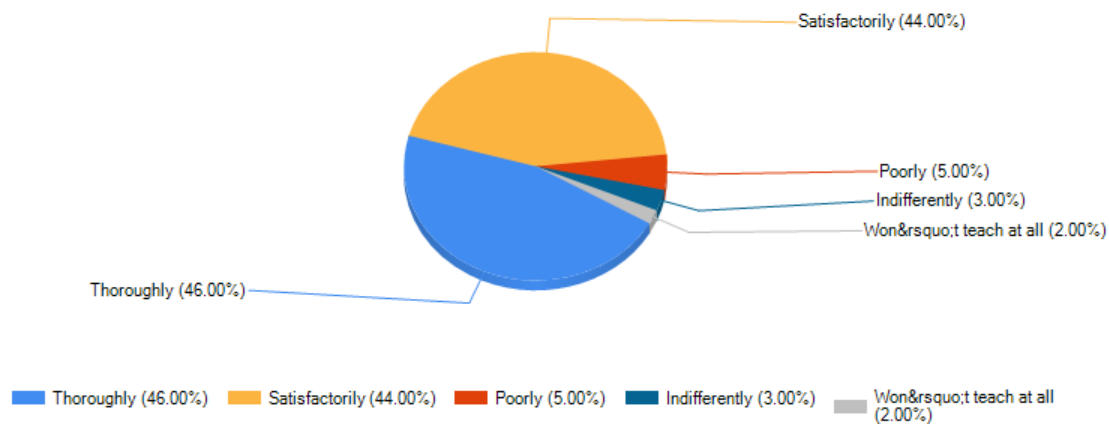
Garhbeta College, P.O. : Garhbeta, Paschim Medinipur, Pin : 721127, West Bengal, India

Phone : +91 03227 265143, Email : garhbetacollege48@gmail.com

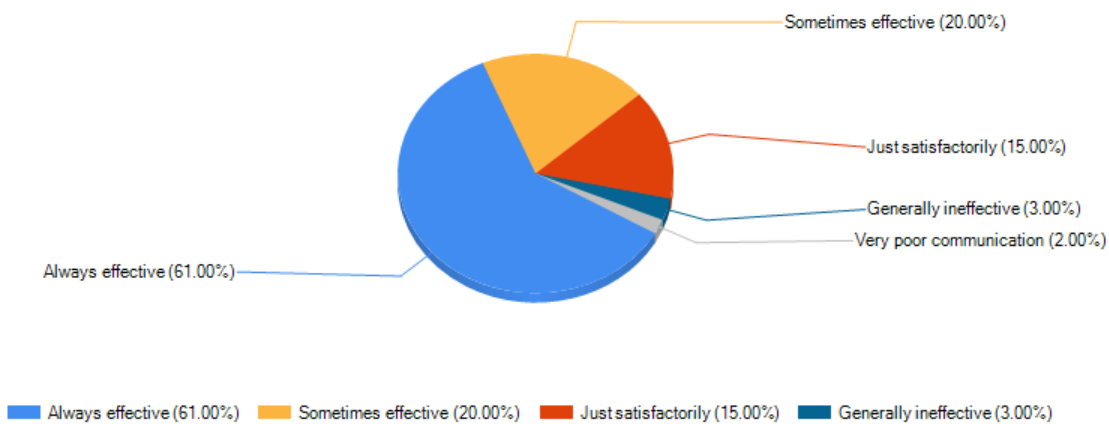


<b>Feedback Name</b>	SSS - College
<b>Session</b>	2022-2023

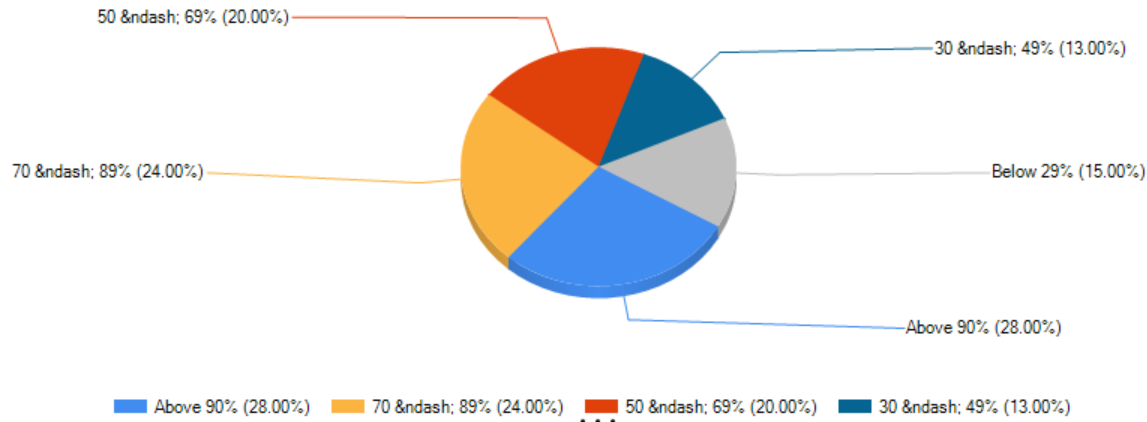
How well did the teachers prepare for the classes?



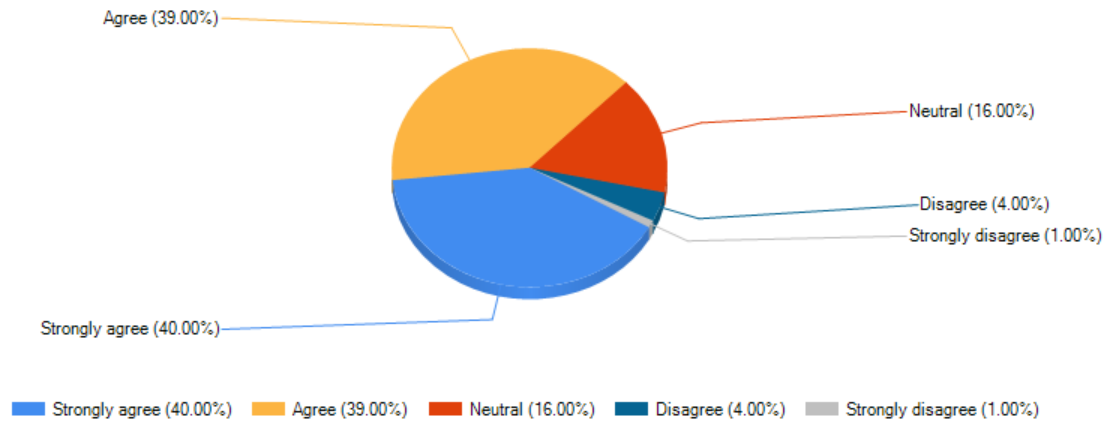
How well were the teachers able to communicate?



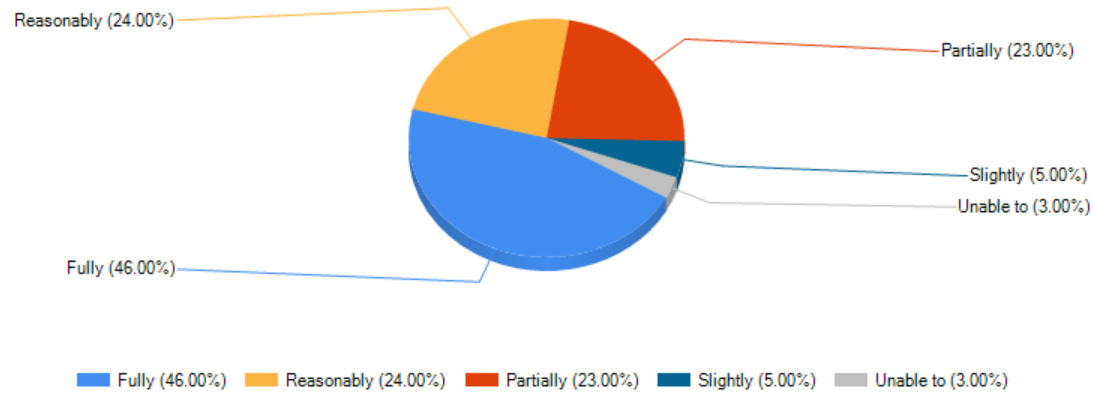
What percentage of teachers use ICT tools such as LCD projector, Multimedia, etc. while teaching.



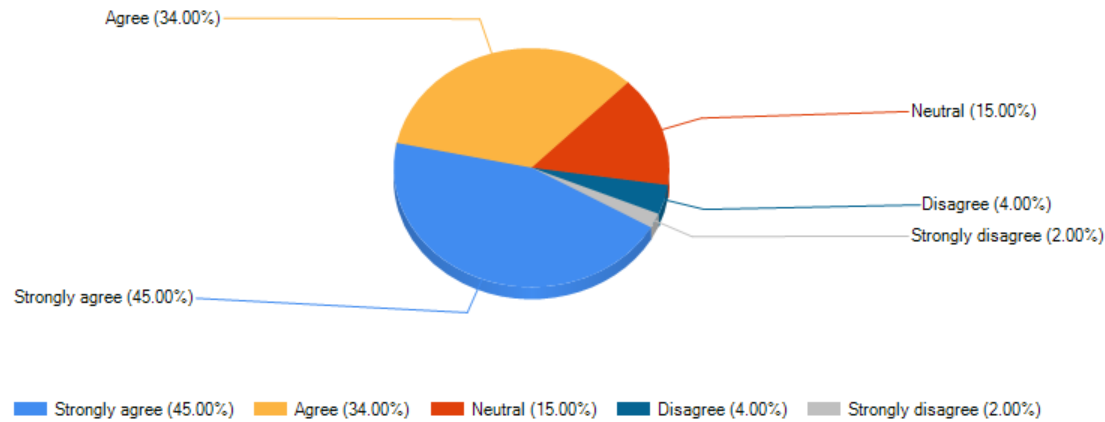
The institution provides multiple opportunities to learn and grow.



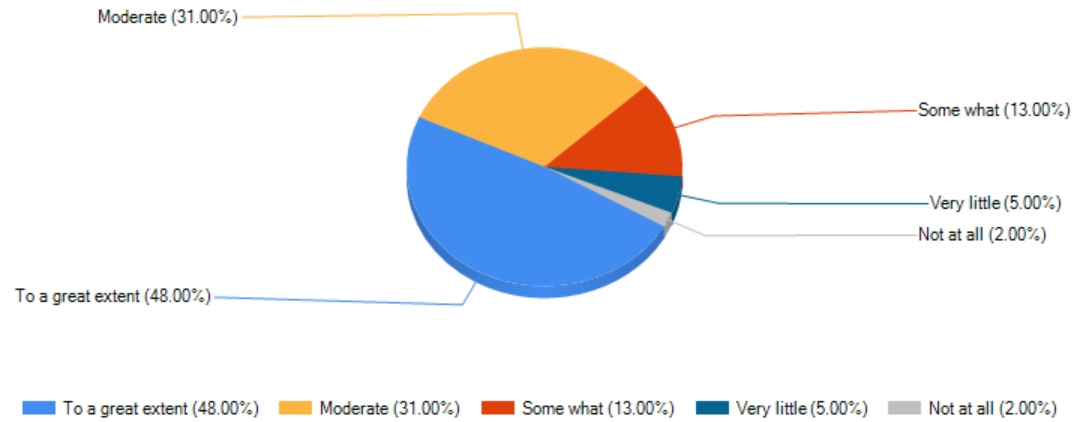
he teachers identify your strengths and encourage you with providing right level of challenges.



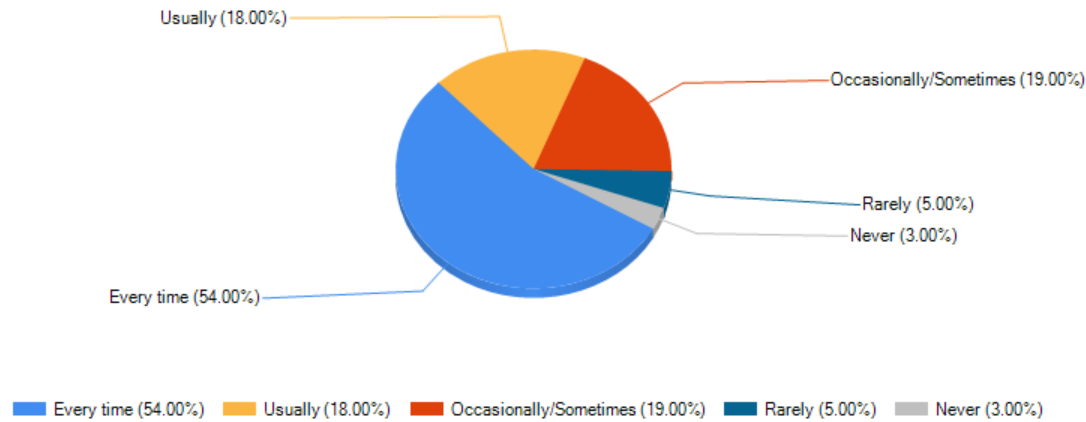
Teachers encourage you to participate in extracurricular activities.



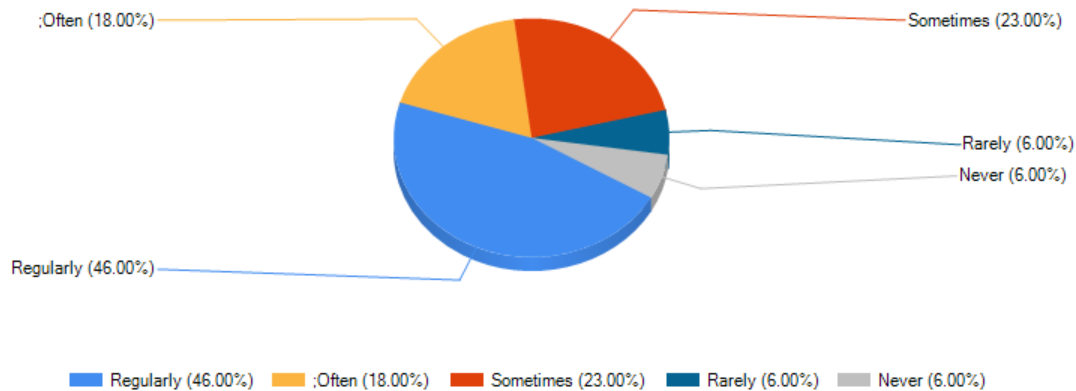
The institute/ teachers use student centric methods, such as experiential learning, participative learning and problem solving methodologies for enhancing learning experiences.



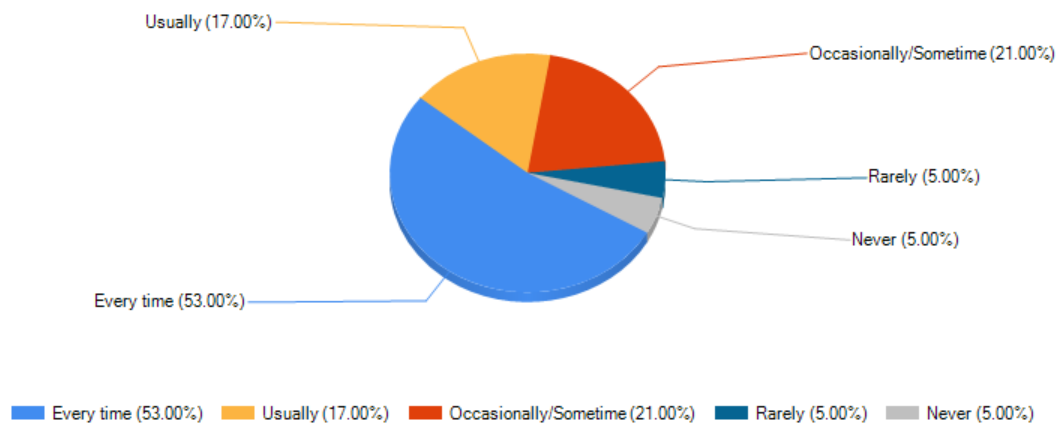
Was your performance in assignments discussed with you?



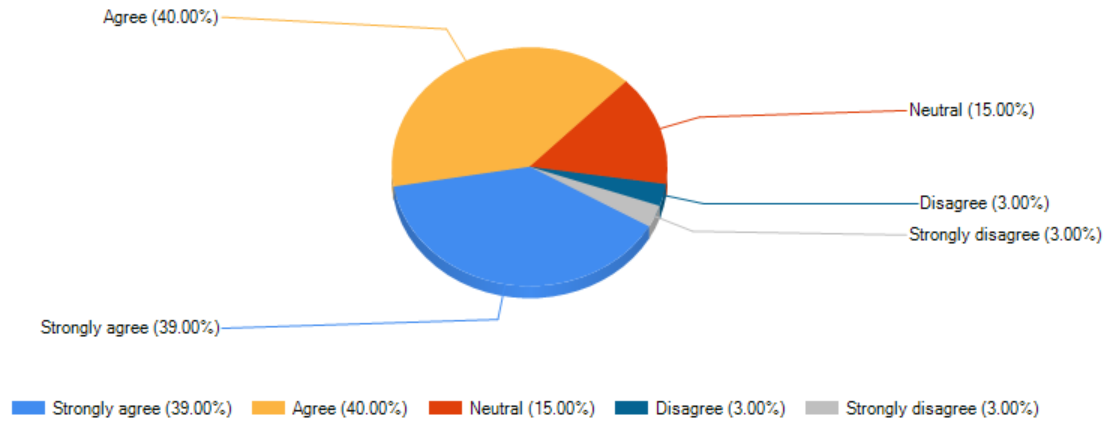
The institute takes active interest in promoting internship, student exchange, field visit opportunities for students



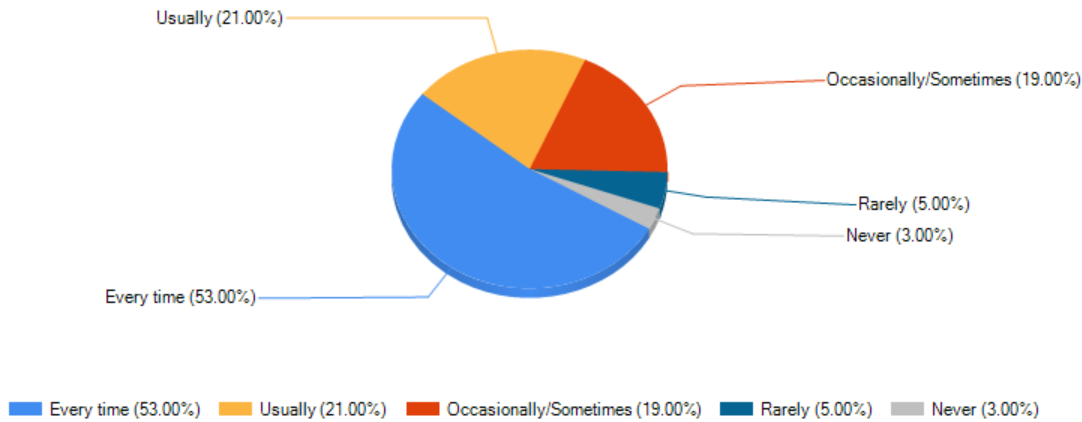
Teachers are able to identify your weaknesses and help you to overcome them.



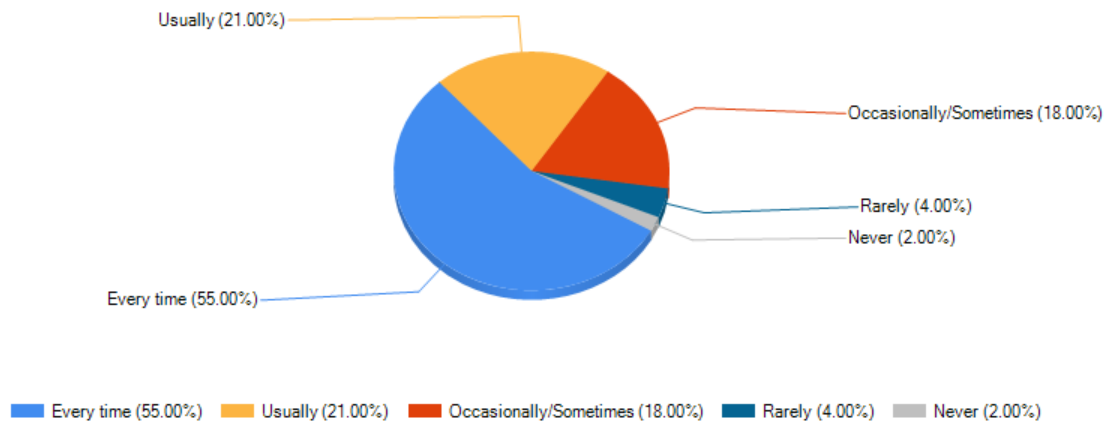
The institution makes effort to engage students in the monitoring, review and continuous quality improvement of the teaching learning process.



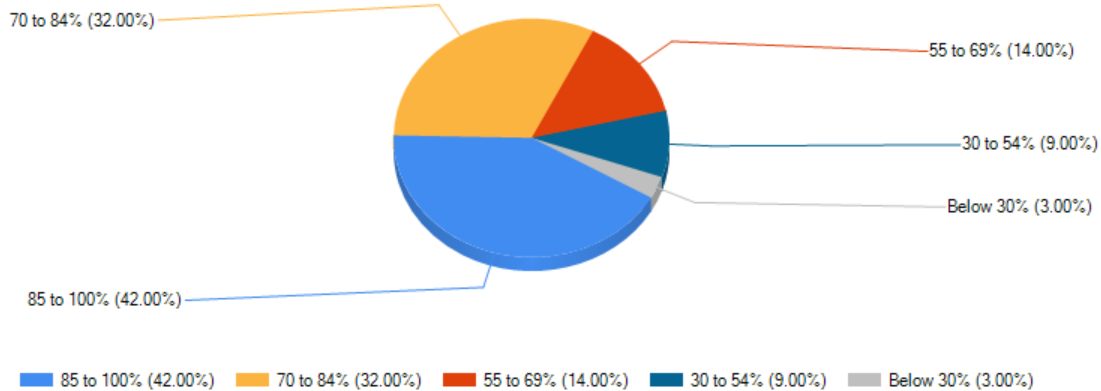
Teachers inform you about your expected competencies, course outcomes and programme outcomes.



The teachers illustrate the concepts through examples and applications.

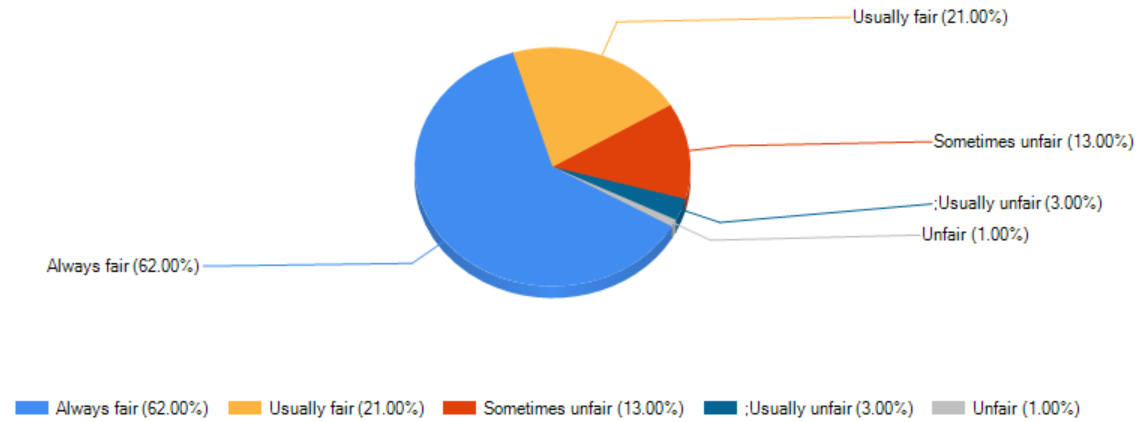


How much of the syllabus was covered in the class?

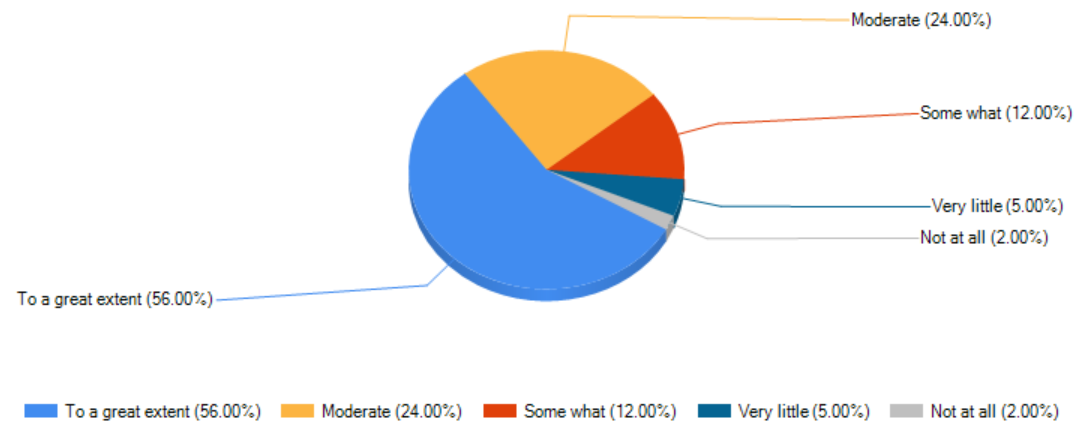




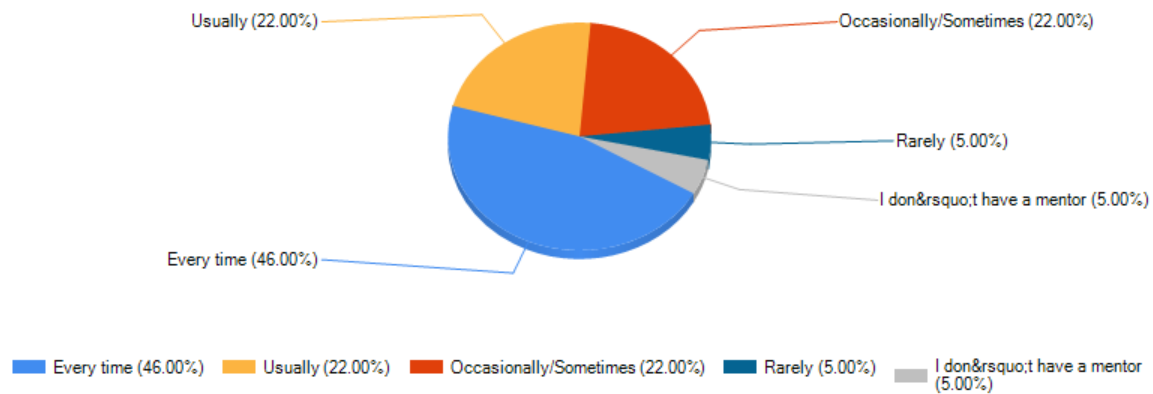
Fairness of the internal evaluation process by the teachers.



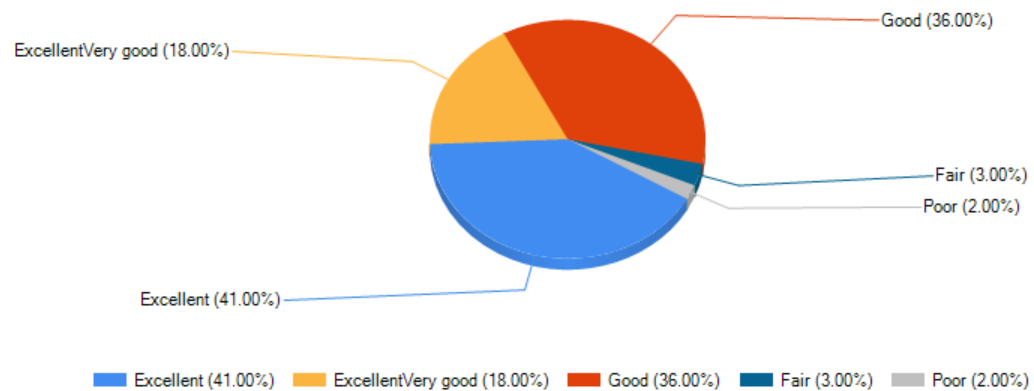
Efforts are made by the institute/ teachers to inculcate soft skills, life skills and employability skills to make you ready for the world of work.



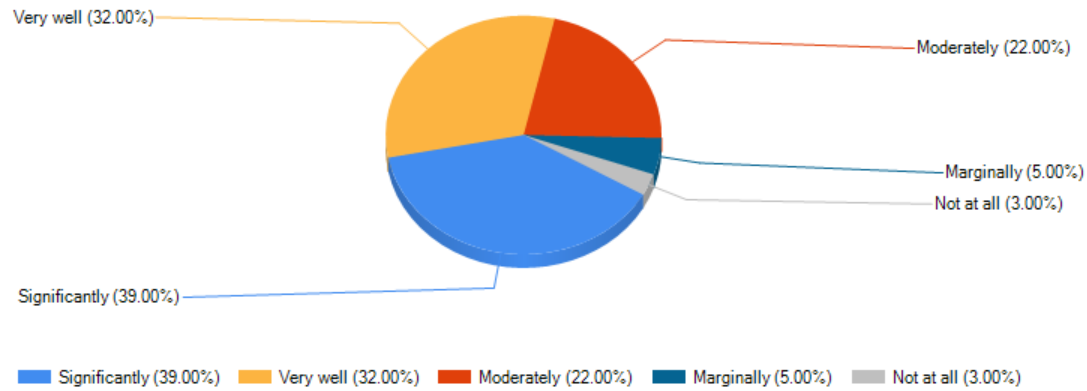
Your mentor does a necessary follow-up with an assigned task to you.



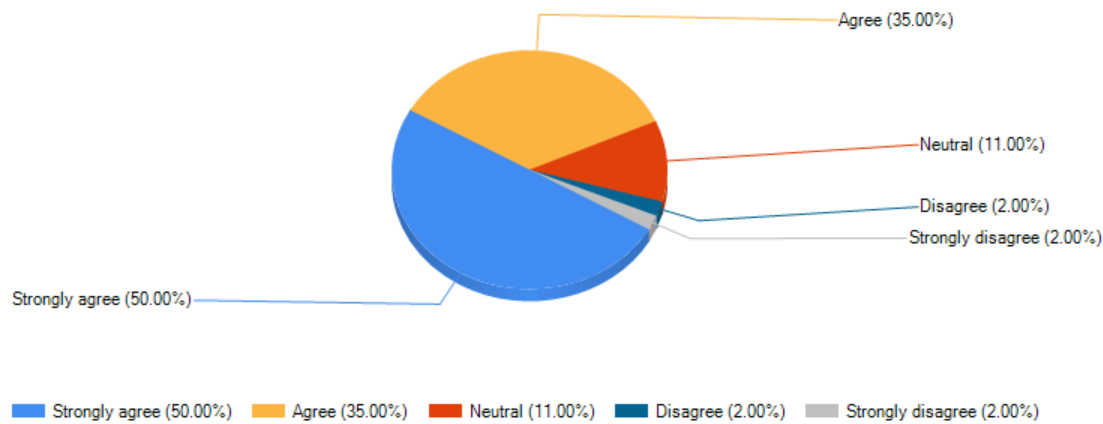
The teacher's approach to teaching can best be described as



The teaching and mentoring process in your institution facilitates you in cognitive, social and emotional growth



The overall quality of teaching-learning process in your institute is very good.



Print